

GDS-3000 Series

Gel Documentation Systems

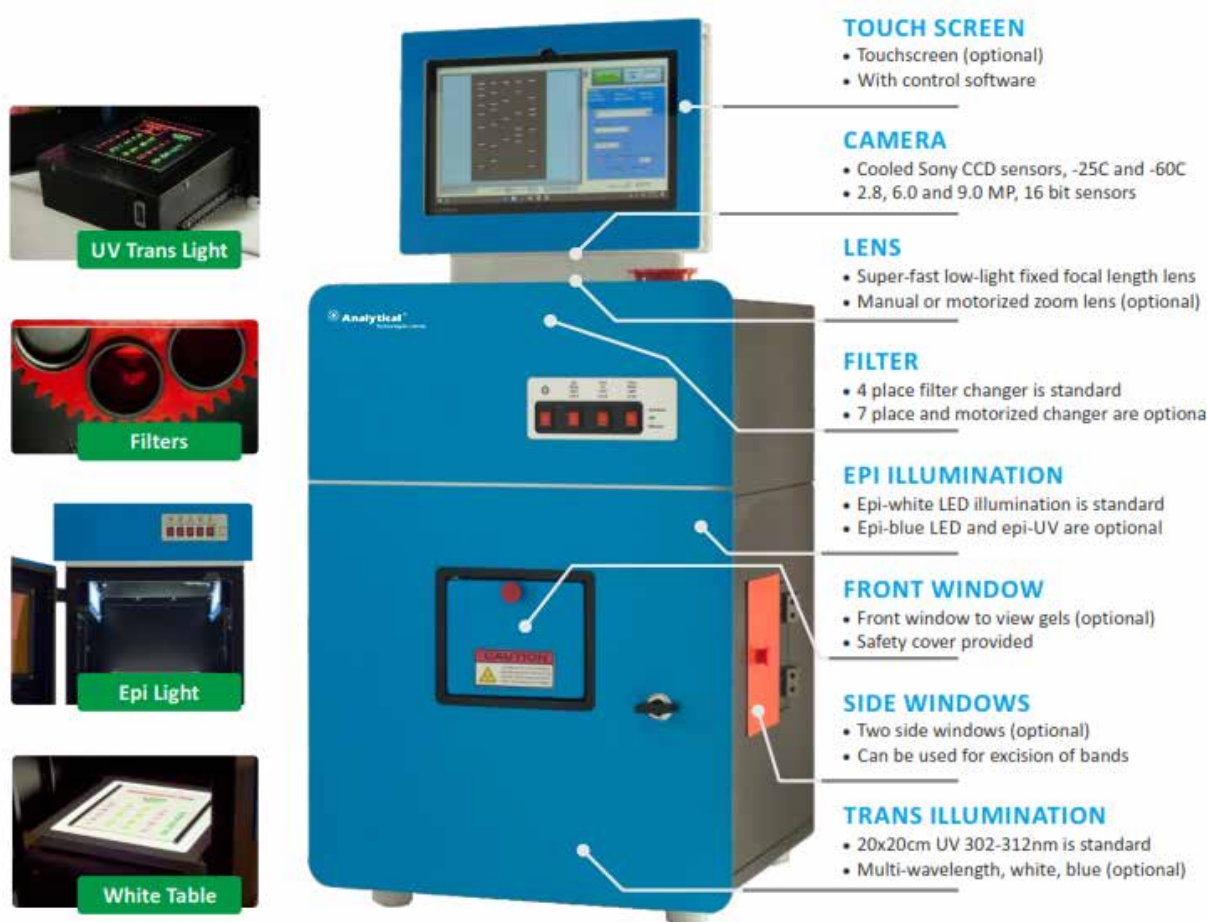


EPCC / PRODUCTS / APPLICATION / SOFTWARE / ACCESSORIES / CONSUMABLES / SERVICES

Analytical Technologies Limited

An ISO 9001 Certified Company

www.analyticalgroup.net



Camera

Featuring high resolution, ultra-sensitive 16-bit scientific grade cooled CCD cameras (with a choice of 2.8, 6.0 or 9.0 megapixel camera) and options for cooling down to -25C or deep-cooling to -60C (assuming lab temperature 20C). Cameras are up to 72% Quantum Efficiency at 430nm for picogram level sensitivity. With low-light lens (F0.95) and or a motorized zoom lens F1.2(with option for numerical feedback value) that is pre-focussed for different zooms or sample setting, mounted inside an enclosure that covers and protects the camera and lens. The camera, lens & cabinet connects to & can be controlled from the PC or touch-screen using live-view acquisition capture software.

Transilluminaon

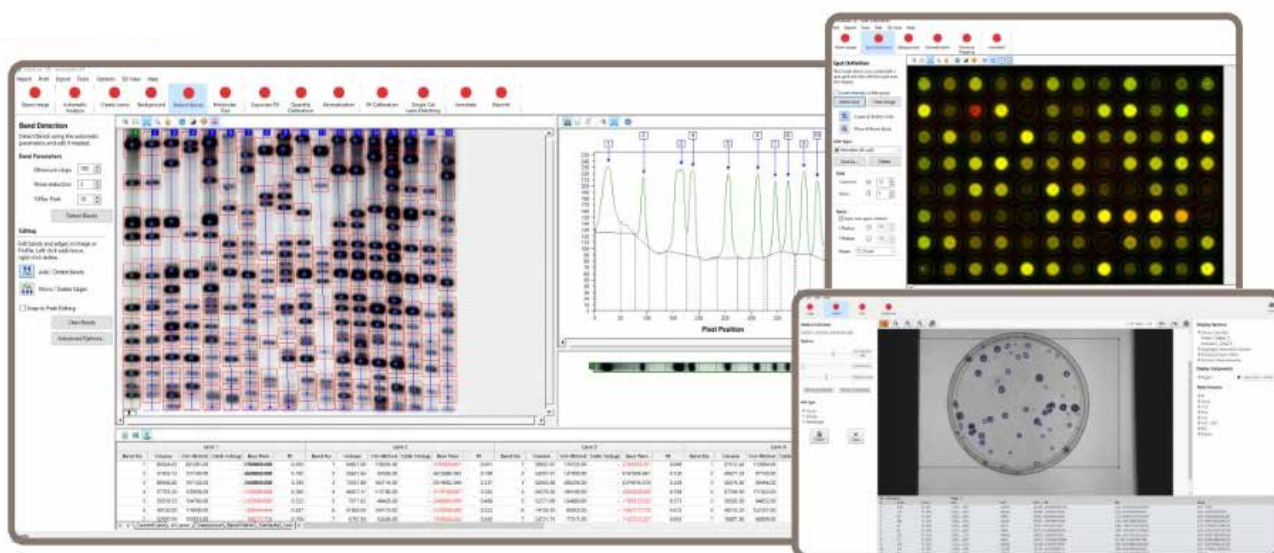
Choice of illumination options with UV trans/epi lighting, wavelength-specific LEDs and more, add to the versatility of the system. UV roll-out transilluminator can be provided in dual 302-312nm and 365nm (additionally 254nm, for triple wavelength configuration), and even Red, Green, Blue LEDs ranges. Standard filter size is 20x20cm. Depending on lens+filter combination, filter size can go up to 21x26cm.

Darkroom Cabinet

The epoxy coated, chemical & corrosion resistant light-tight cabinet has filter holder (4 place holder as standard or 7 filter holder), a UV safety switch and a roll-out transilluminator. The safety switch switches off UV lights as soon as the door is opened. Options for front viewing window with two side windows on the cabinet for excision of bands are also available.

Epilluminaon

Epi-white light illumination through dual LED tubes from above is standard. Ultraviolet epi-illumination in a variety of wavelengths can also be provided. For specific stains, epi-light in blue, green or red LEDs can be provided. A combination of all these illumination modes in the same system can be provided.



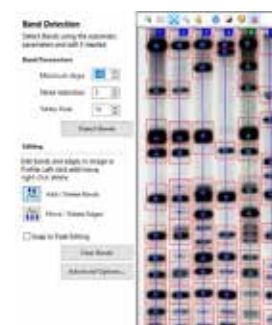
Lane Detection

- Automac mulple lane detecon
- Export and import of lane templates
- Mul-er analysis
- Move, resize and bend mul-box
- Move, resize, bend individual lanes
- Add grimaces to correct band distoron
- Detecon lanes manually too
- Delete false positive lanes



Band Detecon

- Fully auto mulple band detecon
- Adjustable peak parameters
- Band separaon detecon methods
- Manually edit peak/edge detecon
- Automac band measurements
- View mulple lane profiles stacked
- Export lane profile informaon
- Edit band name display on image
- Automac Dendrogram creaoon

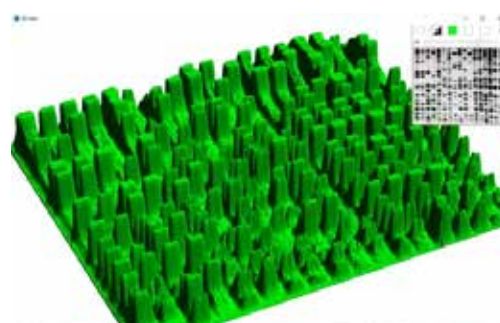


Molecular Size

- Calibrate, detect and calculate Molecular Weights of 1D gels
- Library of standards, Add and Edit exisng
- Automac assignment of standards
- Propagaon by Rf between standards
- 6 curve fing methods
- MWs automacally displayed
- pl standards can increased or decreased
- Volume and Intensity displayed

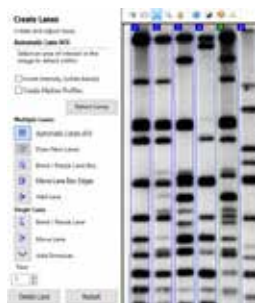


3D View



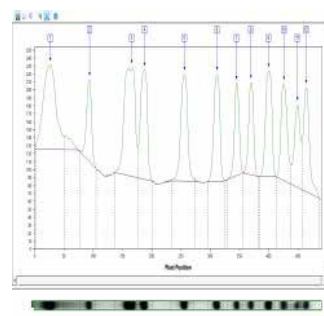
Analysis Report

- View measurements in exportable table
- Wide range of data fields to display in measurements table
- Export lane profile information
- Automac PDF report generator



Band Detecon

- Histograms for viewing band data



	GDS-3116M	GDS-3116F	GDS-3616	GDS-3916
CAMERA				
Sensor	Sony CCD	Sony CCD	Sony CCD	Sony CCD
Megapixels (Resolution)	1.4 MP (1360x1040)	1.4 MP (1360x1040)	6.0 MP (2748x2200)	9.0 MP (3388x2712)
Extendable Image Resolution	5.6 MP (2720x2080)	5.6 MP (2720x2080)	13.5 MP (4122x3300)	20.5 MP (5082x4068)
Pixel Size	6.45x6.45 µm	6.45x6.45 µm	4.54x4.54 µm	3.69x3.69 µm
Bit Depth	16 bit	16 bit	16 bit	16 bit
Grayscale Levels	65536	65536	65536	65536
Cooling (w/ ambient 20C)	-25C	-25C	-25C	-25C
Deep Cooling (w/ ambient 20C)	-60C (optional)	-60C (optional)	-60C (optional)	-60C (optional)
Exposure Time	1 ms to unlimited	1 ms to unlimited	1 ms to unlimited	1 ms to unlimited
LENS				
Focal Length	Zoom 12.5-7.5mm	Fixed, 16mm	Fixed, 16mm	Fixed, 16mm
Aperture	F1.2	F0.95	F1.4	F1.4
Operation	Motorized Focus, Zoom, Iris	Fixed FL, Motorized Focus	Fixed FL, Motorized Focus	Fixed FL, Motorized Focus
Filter Holder	4 place (or motorized optional)	4 place (or motorized optional)	4 place (or motorized optional)	4 place (or motorized optional)
Filters	Red/Green/Orange/Blue/etc	Red/Green/Orange/Blue/etc	Red/Green/Orange/Blue/etc	Red/Green/Orange/Blue/etc
ILLUMINATION				
UV Transillumination Size	20x20cm or 21x26cm	20x20cm	20x20cm	20x20cm
Epi-illumination Image Size	38x30cm	25x20cm	25x20cm	25x20cm
UV Transilluminator	Sliding pullout drawer	Sliding pullout drawer	Sliding pullout drawer	Sliding pullout drawer
UV Transilluminator Standard	302-312nm	302-312nm	302-312nm	302-312nm
UV Transilluminator Optional	254nm / 365nm / Dual / Triple	254nm / 365nm / Dual / Triple	254nm / 365nm / Dual / Triple	254nm / 365nm / Dual / Triple
Overhead Epi-White	Yes	Yes	Yes	Yes
Overhead Epi-UV	Optional	Optional	Optional	Optional
Red/Green/Blue Epi-LEDs,	Optional	Optional	Optional	Optional
White/Blue Trans light table	Optional	Optional	Optional	Optional
CABINET				
Touch Screen	Optional	Optional	Optional	Optional
Darkroom Cabinet	Yes	Yes	Yes	Yes
UV Safety Interlock Switch	Yes	Yes	Yes	Yes
Timer for UV light	Yes	Yes	Yes	Yes
Connectivity	USB 2.0/3.0	USB 2.0/3.0	USB 3.0	USB 3.0
SOFTWARE + COMPUTER				
Gel Acquisition Software	Yes	Yes	Yes	Yes
1D Gel Analysis	Optional	Optional	Yes	Yes
Colony, Blot & Array Analysis	Optional	Optional	Yes	Yes
2D Gel Analysis Software	Optional	Optional	Optional	Optional
Image Database Software	Optional	Optional	Yes	Yes
Computer	Windows + Intel	Windows + Intel	Windows + Intel	Windows + Intel
MISCELLANEOUS				
Voltage	220-240VAC, 50/60 Hz	220-240VAC, 50/60 Hz	110/220VAC, 50/60 Hz	110/220VAC, 50/60 Hz
Size and Weight Operating	55 x 50 x 68 cm, 24kg	55 x 50 x 68 cm, 24kg	55 x 50 x 71 cm, 26kg	55 x 50 x 71 cm, 26kg
Conditions	5C-45C, <75% Humidity	5C-45C, <75% Humidity	5C-45C, <75% Humidity	5C-45C, <75% Humidity

HPLC Servicing, Validation, Trainings and Preventive Maintenance :

HPLC Servicing :HPLC Servicing : We have team of service engineers who can attend to any make of HPLC promptly @the most affordable cost.

Trainings :We also take up preventive Maintenance to reduce downtime of HPLC's Trainings.

AMC's/CMC :AMC's/CMC :We offer user training both in-House and at customer sites on HPLC principles, operations, trouble-shooting.

Validations :Validations :We have protocols for carrying out periodic Validations as per GLP/GMP/USFDA norms.

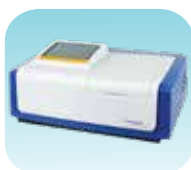
Instruments :Instruments :We offer instruments/Renting Services Modules like pumps,detector etc. on Rent.



About Analytical Technologies

Analytical Technologies is synonymous for offering technologies for doing analysis and is the Fastest Growing Global Brand having presence in at least 96 countries across the global. Analytical Technologies Limited is an ISO:9001 Certified Company engaged in Designing, Manufacturing, Marketing & providing Services for the Analytical, Chromatography, Spectroscopy, Bio Technology, Bio Medical, Clinical Diagnostics, Material Science & General Laboratory Instrumentation. Analytical Technologies, India has across the Country operations with at least 4 Regional Offices, 6 Branch Offices & Service Centers. Distributors & Channel partners worldwide.

Our Products & Technologies



UV/VIS
Spectro 2080+
Double Beam



Infra FTIR



Optima Gas
Chromatograph
3007



Optima Gas
Chromatograph
2979 Plus



Flash
Chromatograph



Atomic Absorption
Spectrophotometer



Liquid Particle
Counter



Optical Emission
Spectrophotometer



DSC/TGA



Semi Auto Bio
Chemistry Analyzer



HEMA 2062
Hematology
Analyzer



Micro Plate
Reader/Washer



URINOVA 2800
Urine Analyzer



Total Organic
Carbon 3800



Fully Automated
CLIA



NOVA-2100
Chemistry Analyzer



PCR/Gradient PCR/
RTPCR



TOC
Analyzer



Laser Particle
Size Analyzer



Ion Chromatograph



Water purification
system

Regulatory compliances



Corporate Social Responsibility

Analytical Foundation is a nonprofit organization (NGO) found for the purpose of:



Analytical
Foundation

1. Research & Innovation Scientist's awards/QC Professional Award : Quality life is possible by innovation only and the innovation is possible by research only, hence ANALYTICAL FOUNDATION is committed to identify such personalities for their contributions across various field of Science and Technology and awarding them yearly. To participate for award, send us your details of research / testing / publication at Info@analyticalfoundation.org

2. Improving quality of life by offering YOGA Training courses, Work shops/Seminars etc.

3. ANALYTICAL FOUNDATION aims to DETOXYFY human minds,souls and body by means of yoga, Meditation, Ayurveda, Health Care, Awards, Media, Events, Camps etc.

Reach us @



 **Analytical**®
Technologies Limited

HPLC Solutions MultipleLabs Analytical Bio-Med Analytical Distributors Analytical Foundation (Trust)

Corporate & Regd. Office:
Analytical House, # E67 & E68,
Ravi Park, Vasna Road, Baroda,
Gujarat 390 015. INDIA

T: +91 265 2253620
+91 265 2252839
+91 265 2252370
F: +91 265 2254395

E: info@hplctechnologies.com
info@multiplelabs.com
info@analyticalgroup.net
info@analyticalbiomed.com

W. www.analyticalgroup.net
www.hplctechnologies.com
www.multiplelabs.com
www.ais-india.com

Sales & Support Offices:
across the country :
Distributors & Channel
partners World Wide

Note : Company reserves rights to add/delete/modify the contents / technical specifications of the catalogue without prior notice.